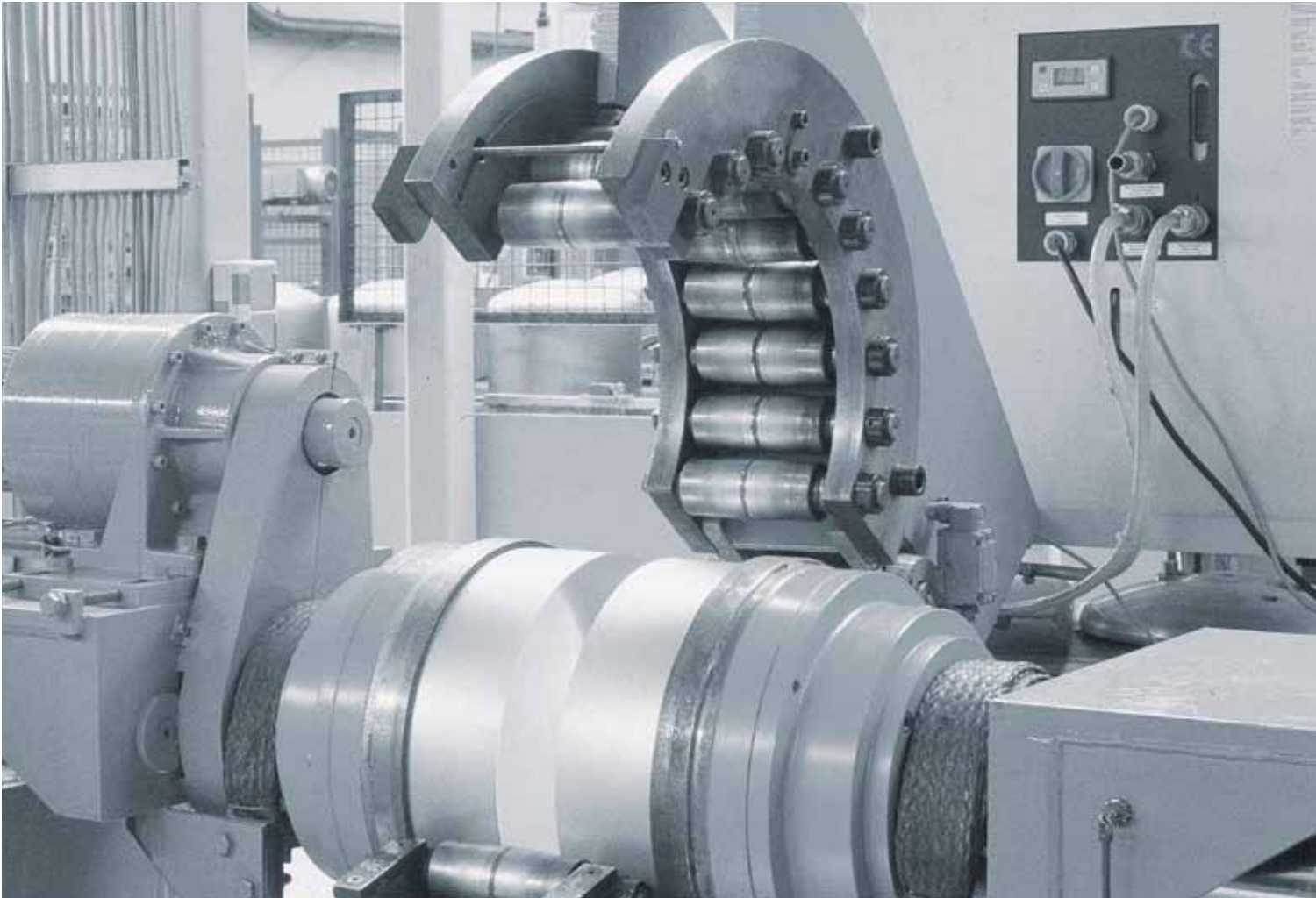




KEGnology® –
Whatever you need, we have the right KEG



SCHÄFER WERKE – guided by the success of our customers

Within the SCHÄFER Group, **SCHÄFER WERKE** are the specialists for the development, manufacture and sale of fine steel sheet and stainless steel products. Constant growth and the uncompromising extension of the product range underline the company's successful strategy. The outstanding success of the five individual business areas lies above all in the ability to put customer wishes into practice quickly, while keeping the products themselves highly individual. At SCHÄFER, it's not a question of one thing or the other. The extraordinary speed at which new sheet steel products can be realised stems from the close cooperation of all business areas with our own **EMW Steel-Service-Center**, which, with a storage capacity of 100,000 t of fine steel sheet, can provide the coils, slit strips, cut-to-size sheets and formats required for further processing in very high quality and at very short notice. **SCHÄFER Perforated Metal** can supply the

market with over 400 different perforation patterns in all regular steel grades, while the perforation of plastic now belongs to the division's standard repertoire, too. In the IT and electronics sector **SCHÄFER IT-Systems** develops server and network cabinets, data centre and water chilled cabinet solutions, housings for electronic control or testing devices, housings for medical equipment, enclosures and protective housings for other sensitive electronic components as well as all kinds of special housings. **SCHÄFER Interior Systems** develops and manufactures high-quality steel furniture systems for workshop and factory floor as well as for office and administration. **SCHÄFER Container Systems** is one of the world's leading suppliers of beverage containers for beer, wine and soft drinks as well as industrial containers for solid and liquid substances and granulate. Our great manufacturing expertise, the great range of our technical equipment and



the outstanding qualification of our employees make SCHÄFER an ideal partner for contract manufacturing. In their cooperation with SCHÄFER, our customers can be sure of measurable time and cost-saving benefits.



More than just a barrel



All over the world, customers place their trust in SCHÄFER – and with good reason. There are already well over 13 million SCHÄFER KEGs in use all over the world, the best possible proof of quality and expertise in re-usable keg technology. The high-grade basis material for all SCHÄFER reusable KEGs is stainless steel, and for all non-returnable KEGs, it is coated steel sheet. Fully automated deep drawing and finishing on state-of-the-art equipment also guarantee that we can manufacture KEGs of outstanding quality.

For more than 3 decades SCHÄFER has set new standards with innovative ideas and products.

With developments in line with market conditions and customer requirements, we have perfected our KEG-technology and established ourselves worldwide as a universal supplier.

I.	Milestones in KEGnology®	6
II.	PLUS KEG / junior PLUS KEG	8
III.	ECO KEG	10
IV.	SUDEX KEG	12
V.	SOFT DRINK KEG	14
VI.	non-returnable KEG	16
VII.	freshKEG	18
VIII.	smartDRAFT	20
IX.	Accessories	24
X.	Service / Contacts	26



1978

SCHÄFER develops the first KEG with a stainless steel liner and polyurethane (PU) jacket: the PLUS KEG's successful career is launched

1983

Improvement of the KEGs' advertising effectiveness. Coloured decors and brewery logos make SCHÄFER KEGs an effective brand carrier

1985

The KEGs are fitted with a safety bursting point and are GS approved to create a new standard of safety. The datixPLUS character code provides the basis for logistics



1989

SCHÄFER presents three newly developed products at the Interbrau: SOFT DRINK KEG, junior PLUS KEG and keggy, the KEG with the integrated CO₂ supply

1990

SCHÄFER succeeds in manufacturing a CFC-free PU jacket and increases user value by enabling partial repairs; two significant environmental benefits

1992

Transponders are introduced for KEG Identification. Combined with datixPLUS, this is the perfect control and logistics system

1993

Inmould labelling perfects the coloured decoration. SCHÄFER is first on the market to receive Coca-Cola Approval

Milestones in KEGnology®



1995

SCHÄFER begins production of 100% steel KEGs: With SUDEX KEGs, SCHÄFER now has a comprehensive KEG range. SCHÄFER is the first in the industry to gain DIN EN ISO 9001TÜV-Cert approval



2000

The new ECO KEG wins two of the most coveted international design awards:

- iF Ecology Design Award 2000
- iF Product Design Award 2000



2006

smartDRAFT™: The dispensing revolution for restaurants and catering. Ingeniously simple: no need for cleaning or servicing



2009

New additions to the smartDRAFT™ family

- smartDRAFT™ MINI, ideal for party cellars, beer gardens or street sales
- smartDRAFT™ Tropical with its integrated cooler can guarantee fresh draught beer any place, any time
- smartDRAFT™ MAX has enough space for two smartDRAFT™ KEGs on tap as well as two others being pre-cooled



1998

Partly PU-coated SOFT DRINK KEGs and junior PLUS KEGs supplement the product range, naturally with proven SCHÄFER benefits, like safety bursting point and character code, stackability and noise reduction



2001

freshKEG: genuine draught beer, any place, any time. The new generation of SCHÄFER KEGnology is presented at the drinktec in Munich



2009

At the drinktec 2009 in Munich, a new milestone in KEG history was set. The SCHÄFER non-returnable KEG in stainless steel! Strong. Lightweight. Economical



All types of fittings and necks

Ergonomic hand-holds

PU jacket is recyclable, CFC-free, available in different colours

Noise reducing rolling rings

Safety bursting point



Embossed numbers, character code datixPLUS, transponder, barcode

Smooth-walled stainless steel liner

Biologically safe

Coloured decor: in-mould coating or in-mould labelling

Stable stacking rim

The non plus ultra of KEG technology

Technical Data

Stainless steel liner material	standard: mat. no. 1.4301, AISI 304 special: mat. no. 1.4571, AISI 316
Full coating	PU (polyurethane), CFC-free, UV-stabilised
Partly coated (only junior PLUS KEG)	10.4 l and 20.5 l
PU colour	standard: black special colours: on request
Neck and fitting	all current types
Operating overpressure	3 bar
Test pressure	minimum 8 bar overpressure
Opening pressure of safety bursting point	40 ± 5 bar overpressure PLUS KEG 35 ± 5 bar overpressure junior PLUS KEG
Numbering:	standard embossed (PLUS KEG only)
Coding (options)	Character code datixPLUS (for standard JPK)/ transponder/barcode
Bavarian tapping:	PLUS KEG -DIN and junior PLUS KEG available with spring valve or bung hole
Repairs:	partial only, new PU jacket possible

PLUS KEG: With over 7 million KEGs on the market worldwide, this is the best seller in the entire range. All the benefits in one single KEG. Perfect technology, easy to handle, full PU coating, tested for safety, distinctive brand presentation and reliable logistics. What more can a KEG offer? For beer and wine, PLUS KEG is the first choice. Polyurethane coated KEG with stainless steel liner: 15, 20, 30, 40 and 50 litres in DIN standard, 30 and 50 litres in Euro standard form.

junior PLUS KEG: whether fully or partly coated with polyurethane, the junior can offer all the benefits of the PLUS KEG, plus compact dimensions. For beer and wine available in 10.4, 15.5 or 20.5 litres in DIN standard.



PLUS KEG DIN 6647-1

Content	15 l	20 l	30 l	40 l	50 l
	3.96 US gal	5.28 US gal	7.93 US gal	10.57 US gal	13.21 US gal
Height	260 mm	330 mm	400 mm	510 mm	600 mm
External Ø	395 mm	395 mm	395 mm	381 mm	395 mm
Weight ¹	approx. 7.5 kg	approx. 9.0 kg	approx. 9.5 kg	approx. 10.0 kg	approx. 12.3 kg

PLUS KEG Euro standard

Content	30 l	50 l	
	7.93 US gal	13.21 US gal	
Height	365 mm	532 mm	
External Ø	425 mm	425 mm	
Weight ¹	approx. 10.0 kg	approx. 12.3 kg	

junior PLUS KEG DIN 6647-1

Content	10.4 l	15.5 l	20.5 l	
	2.75 US gal	4.10 US gal	5.42 US gal	
Filling volume	10 l	15 l	20 l	
Height	326 mm	443 mm	560 mm	
External Ø	239 mm	239 mm	239 mm	
Weight ¹	approx. 3.6 kg	approx. 4.4 kg	approx. 5.2 kg	

US gal = 3.785 l ¹ weight without fitting



All types of fittings and necks

Ergonomic hand-holds

Biologically safe

Recycleable

Safety bursting point



Lasered numbers, character code, transponder, barcode

Coloured top and bottom rings of polypropylene (PP)

Stainless steel liner with brushed exterior

Stable stacking rim

Exceptional KEG for exceptional brands

Technical Data

Stainless steel liner material	standard: mat. no. 1.4301, AISI 304 special: mat. no. 1.4571, AISI 316
Top and bottom rings	PP (polypropylene), UV-stabilised, recyclable material
PP colour	standard black, other colours acc. to customer wishes
Neck and fitting	all current types
Operating overpressure	3 bar or 7 bar
Test pressure	minimum 8 bar overpressure
Opening pressure of safety bursting point	35 ± 5 bar overpressure (KEGs Ø 239 mm) 40 ± 5 bar overpressure (KEGs Ø 407 mm)
Numbering	standard, lasered
Coding (options)	character code/transponder/barcode
Bavarian tapping	not available
Repairs	PP rings can be replaced



The **ECO KEG** is a trend-setter, confirmed immediately by two international awards - for innovative design and for exceptional ecological benefits. Both awards came from the internationally recognised "Industrie Forum Design" in Hanover.



The ECO KEG consists of a stainless steel liner, fitted with top and bottom rings of polypropylene (PP). These are connected to the liner by a safety clip-on technique and are therefore replaceable. This makes the KEG more flexible, economical and more convenient in operation and handling.

ECO Junior KEG DIN 6647-1

Content	5.2 l 1.37 US gal	10.4 l 2.75 US gal	15.5 l 4.10 US gal	20.5 l 5.42 US gal	
Filling volume	5 l	10 l	15 l	20 l	
Height	200 mm	326 mm	443 mm	560 mm	
External Ø	239 mm	239 mm	239 mm	239 mm	
Weight ¹	approx. 1.9 kg	approx. 2.5 kg	approx. 3.2 kg	approx. 3.7 kg	

ECO KEG EURO standard

Content	20 l 5.28 US gal	25 l 6.61 US gal	30 l 7.93 US gal	50 l 13.21 US gal	58.67 l 15.5 US gal
Height	283 mm	324 mm	365 mm	532 mm	603 mm
External Ø	407 mm	407 mm	407 mm	407 mm	407 mm
Weight ¹	approx. 6.8 kg	approx. 7.3 kg	approx. 7.8 kg	approx. 9.7 kg	approx. 10.6 kg

ECO Softdrink KEG DIN 6647-2

Content	5.2 l 1.37 US gal	10.4 l 2.75 US gal	15.5 l 4.10 US gal	20.5 l 5.42 US gal	
Filling volume	5 l	10 l	15 l	20 l	
Height	200 mm	326 mm	443 mm	560 mm	
External Ø	239 mm	239 mm	239 mm	239 mm	
Weight ²	approx. 2.0 kg	approx. 2.7 kg	approx. 3.4 kg	approx. 4.0 kg	

US gal = 3.785 l ¹ weight without fitting ² weight with L type fitting

The ECO KEG is available in all sizes from 5 – 58.67 litres and for operating pressures of 3 bar acc. to DIN 6647-1 (for beer and wine) and 7 bar acc. to DIN 6647-2 (for soft drinks)



All types of fittings and necks



The Classic KEG

Technical Data

Material	standard: mat. no. 1.4301, AISI 304 special: mat. no. 1.4571, AISI 316
Material thicknesses:	top ring: DIN and Euro: standard 1.7 mm / special: 2.0 mm Ø 233, 278 and 312 mm: standard 1.5 mm liner: standard 1.5 mm bottom ring: DIN and Euro: standard 2.0 mm / special: 1.7 mm Ø 233, 278 and 312 mm: standard 1.5 mm
Neck and fitting	all current types
Stackable	on request
Operating overpressure	3 bar or 7 bar
Test pressure	minimum 8 bar overpressure
Opening pressure of safety bursting point:	35 ± 5 bar overpressure
Numbering	embossed (standard)
Coding (options)	character code/transponder/barcode
Bavarian tapping	not available
Repairs	possible

The **SUDEX stainless steel KEG** offers tried and tested SCHÄFER technology throughout the entire range. Made entirely of high-grade stainless steel, it is robust, durable and easy to use, a genuine classic KEG for beer and wine – and there's a great range of choice: 15 to 50 litres in DIN or EURO standard (EURO standard up from 20 litres), 1/6 Barrel (diameter 233 mm), 7.75 and 15.5 US gal to US standard, 10 to 25 litres Slimline KEGs (diameter 278 mm) as well as 10 to 30 litres Slimline KEGs (diameter 312 mm).



SUDEX KEG DIN 6647-1 and 2

Content	15 l	20 l	30 l	50 l	
	3.96 US gal	5.28 US gal	7.93 US gal	13.21 US gal	
Height	258 mm	310 mm	400 mm	600 mm	
External Ø	363 mm	363 mm	381 mm	381 mm	
Weight ¹	approx. 7.5 kg	approx. 8.2 kg	approx. 9.4 kg	approx. 12.0 kg	

15/20 l = without roller

SUDEX Slimline KEG ø 278 mm

Content	10 l	12 l	15 l	20 l	25 l
	2.64 US gal	3.17 US gal	3.96 US gal	5.28 US gal	6.61 US gal
Height	281 mm	314 mm	365 mm	447 mm	532 mm
External Ø	278 mm	278 mm	278 mm	290 mm	290 mm
Weight ¹	approx. 4.5 kg	approx. 4.9 kg	approx. 5.4 kg	approx. 6.3 kg	approx. 7.2 kg

10/12/15 l = without roller

SUDEX KEG EURO standard

Content	20 l	25 l	30 l	50 l	
	5.28 US gal	6.61 US gal	7.93 US gal	13.21 US gal	
Height	285 mm	327 mm	365 mm	532 mm	
External Ø	395 mm	395 mm	408 mm	408 mm	
Weight ¹	approx. 8.8 kg	approx. 9.1 kg	approx. 10.1 kg	approx. 12.6 kg	

20/25 l = without roller

SUDEX Slimline KEG ø 312 mm

Content	10 l	15 l	20 l	25 l	30 l
	2.64 US gal	3.96 US gal	5.28 US gal	6.61 US gal	7.93 US gal
Height	244 mm	310 mm	374 mm	440 mm	506 mm
External Ø	312 mm	312 mm	326 mm	326 mm	326 mm
Weight ¹	approx. 5.0 kg	approx. 5.8 kg	approx. 6.5 kg	approx. 7.3 kg	approx. 8.1 kg

10/15 l = without roller

SUDEX Slimline KEG ø 237 mm

Content	20 l				
	5.28 US-gal				
Height	568 mm				
External Ø	237 mm				
Weight	approx. 5.0 kg				

¹ weight without fitting

SUDEX KEG USA Standard

Content	19,5 l	29,33 l	29,33 l	58,67 l	
	1/6 Barrel	1/4 Barrel tall	1/4 Barrel	1/2 Barrel	
Height	590 mm	590 mm	345 mm	590 mm	
External Ø	233 mm	283 mm	404 mm	404 mm	
Weight ¹	approx. 5.9 kg	approx. 7.9 kg	approx. 9.9 kg	approx. 13.5 kg	

US gal = 3.785 l ¹ weight without fitting



All types of fittings and necks

Ergonomic hand-holds

Recycleable PU jacket, CFC-free, UV stabilised, available in different colours

Safety bursting point



Character code datixPLUS, transponder, barcode

Coloured decor: in-mould coating or in-mould labelling

Smooth-walled stainless steel liner

Biologically safe

Repairs possible

Stable stacking rim

Soft Drink KEG

Technical Data

Stainless steel liner material	standard: mat. no. 1.4301, AISI 304 special: mat. no. 1.4571, AISI 316
Full coating:	PU (polyurethane), UV-stabilised
Partly coated:	10.4 l and 20.5 l
PU colour:	standard: black special colours: on request
Neck and fitting	standard SDK neck or neck with left-hand thread
Operating overpressure	7 bar
Test pressure	approx. 10 bar overpressure
Opening pressure of safety bursting point:	standard: 35 ± 5 bar overpressure 41 l SDK: 40 ± 5 bar overpressure
Coding (options)	Standard: datixPLUS/ alternative: transponder/barcode
Repairs:	partial only, new PU jacket possible

The **SOFT DRINK KEG** from SCHÄFER has many trend-setting benefits. Coca-Cola, Pepsi, Sinalco and many others are happy to rely on SCHÄFER expertise and have granted their approval for the production of all Soft Drink KEGs. This cool container proved a great success and was awarded the State Design Prize for its clarity and aesthetic appearance.

Polyurethane coated KEG with stainless steel liner, DIN compliant, in 10.4 l to 41 litre sizes or, partly coated, in 10.4 l or 20.5 litre sizes. Ideal for all soft drinks.



SOFT DRINK KEG DIN 6647-2

Content	10.4 l 2.75 US gal	15.5 l 4.10 US gal	20.5 l 5.42 US gal	41 l 10.83 US gal
Filling volume	10 l	15 l	20 l	40 l
Height	326 mm	443 mm	560 mm	510 mm
External Ø	239 mm	239 mm	239 mm	381 mm
Weight ¹	approx. 3.8 kg	approx. 4.6 kg	approx. 5.5 kg	approx. 10.4 kg

US gal = 3.785 l ¹ weight with L type fitting



One-way flat-type fitting



Strong. Lightweight. Economical

Technical Data

Material	Flat carbon steel, coated
Material thickness	0.4 mm
Fitting (flat)	one-way POM fitting pressureless safety function
Liner bag	multilayer foil
Operating pressure	3 bar overpressure
Test pressure	3.9 bar overpressure, minimum
Safety burst point release pressure	4.5 bar overpressure, minimum
Stacking capacity	4 x full standing upright 10 x empty standing upright
Stack height in transport	max. 4 x full,
Numbering	standard label

With the new **non-returnable KEG** in steel, SCHÄFER has created an innovation that will revolutionize the transportation of beer, wine and other beverages. Filling can be carried out on existing KEG filling lines with minimal changes, while the dispensing equipment requires no changes at all. After use, the non-returnable KEG depressurizes automatically and can be fully recycled wherever you are, without any need to separate the material components.

The 30 l non-returnable KEG weighs only 3.5 kg and works on conventional filling and dispensing equipment – and the need for time-consuming recovery, repair and cleaning of reusable kegs is eliminated completely. Storage costs for reusable KEGs can be saved by ordering more non-returnable KEGs at peak times. The KEG's sleeve and collar also allow optimum brand presentation.

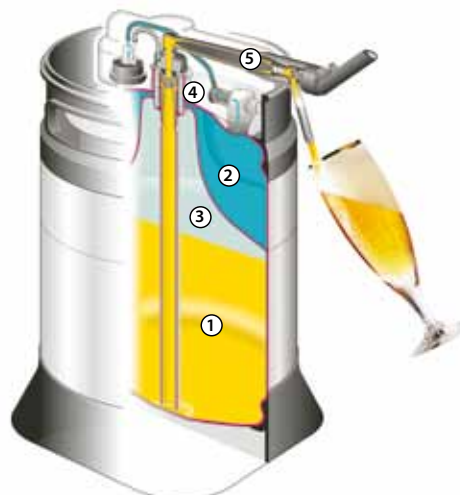


non-returnable KEG

Content	30.7 l 7.93 US gal
Filling volume	30 l
Height	437 mm
External	400 mm
Weight	approx. 3.5 kg



- ① Beverage, always fresh
- ② Gas container with dispensing gas (carbon dioxide/nitrogen/mixed gas; filling pressure max. 7 bar)
- ③ Dispensing gas (dispensing pressure, standard 1 bar overpressure)
- ④ Safety fitting
- ⑤ Dispense head with pressure reducer and tap



Real draught beer, any place, any time

Technical Data

Stainless steel liner material	standard: mat. no. 1.4301, AISI 304 special: mat. no. 1.4571, AISI 316
Top and bottom rings	PP (polypropylene), UV-stabilised, recyclable material
PP colour	standard: black gloss, other colours on request
Neck and fitting	freshKEG safety system
Operating overpressure	3 bar/7 bar
Test pressure	approx. 9 bar overpressure
Opening pressure of safety bursting point:	standard: 25 ± 7 bar overpressure
Numbering	standard, lasered
Coding (options)	character code/transponder/barcode
Dispense head	dispense head with integrated compensator and pressure reducer
Flow	1.5 to 2.0 litres/minute (standard setting), depending on pressure and temperature
Repairs	PP rings, CO ₂ valve and parts of the fitting can be replaced
Ecology	re-usable system. All component parts can be recycled
Application	can be used for almost all beverages
Cleaning dispense head	according to instructions, max. cleaning temperature 55°C
Cooling	Ice packs, special freshKEG cooler

freshKEG is simply ideal for parties and festivals, large-scale events, bistros and catering businesses, because the two-chamber system with "CO₂ inside" and the freshKEG dispense head, with the world's shortest beer dispensing line, guarantee maximum flexibility and quality. Any place, any time. The perfect way to have fun, increase sales and reduce the workload! Specially developed cooling accessories (ice-packs, cooler) make sure the beer is at exactly the right temperature and that the customers are extremely satisfied.



freshKEG DIN 6647-1 u. 2

Content*	5.2 l 1.37 US gal	10.3 l 2.72 US gal
Filling volume	5 l	10 l
Height	258 mm	394 mm
External Ø	253 mm	253 mm
Weight	approx. 3.4 kg	approx. 4.4 kg

* other sizes with contents of between 5 and 15 litres are available depending on the order volume



Technical Data



smartDRAFT™ TAP

Dimensions	
Flow rate ¹	1.8 l/minute at pre-set pressure of 1.1 bar
Weight	1.6 kg
Height	186 mm
Width	124 mm
Length	346 mm

¹ for all beers with 4.5 – 5.5 g CO₂/l in a temperature range of 3 – 8 °C



smartDRAFT™ One-way beer line

Dimensions	
Length	270 mm
Weight	20 g



smartDRAFT™ KEG

Content	10.3 l/2.72 US gal
Filling volume	10 l
Weight	ca. 4.9 kg
Dimensions	
Height	411 mm
External Ø	253 mm
Material grades for stainless steel liner	standard: mat. no. 1.4301, AISI 304 special: mat. no. 1.4571, AISI 316
Top and bottom rings	PP (polypropylene), UV-stabilised, recycleable material
PP colouring	standard: black, other colours available on request
Neck and fitting	smartDRAFT™ safety system
Operating overpressure	max. 3 bar
Test pressure	approx. 9 bar overpressure
Safety burst point triggering pressure	25 ± 7 bar overpressure
Numbering	standard
Coding (optional)	Character code datixPLUS/transponder/barcode
Ecology	reusable system, all parts are recycleable



smartDRAFT™ MINI

Dimensions	
Height	605 mm
Width	405 mm
Depth / with drip tray	365/500 mm
Weight	11.5 kg



SMARTDRAFT™ STANDARD

Dimensions	
Height	542 mm
Width	350 mm
Depth / with drip tray	535/670 mm
Weight	25 kg
Tapping temperature ¹⁾	3° C to 8° C
Cooling time ¹⁾	3 h
Room temperature	10° C - 32° C
Nominal voltage / frequency	230 V/50 Hz
Wattage	150 W
Power consumption	0.6 kWh/day
Compressor rating ²⁾	140 W
Fan volume flow rate	140 m ³ /h
Coolant	R134a
Coolant amount	0.08 kg

¹⁾ to 8° C at 20° C room temperature/beer storage temperature ²⁾ at 0° C evaporation temperature



smartDRAFT™ TROPICAL

Dimensions	
Height	610 mm
Width	405 mm
Depth / with drip tray	575/715 mm
Weight	30 kg
Tapping temperature ¹⁾	3° C to 8° C
Cooling time ¹⁾	3 h
Room temperature	10° C - 40° C
Nominal voltage / frequency	230 V/50 Hz
Wattage	175 W
Power consumption	0.5 kWh/day
Compressor rating ²⁾	140 W
Fan volume flow rate	130 m ³ /h
Coolant	R134a
Coolant amount	0.08 kg

¹⁾ to 8° C at 20° C room temperature/beer storage temperature ²⁾ at 0° C evaporation temperature

Fresh draught beer. Any place. Any time

Experience real flavour

Two-thirds of all beer drinkers prefer the flavour of draught beer to bottled beer. So it's a great pity that in lots of restaurants and catering businesses, so many of them are not able to enjoy the full flavour of their favourite drink. A dispensing system that is too big and consequently under-used, that has the wrong settings, insufficient hygiene and is operated by inexperienced bar staff leads to poor dispensing quality and a disappointing drink.

smartDRAFT™ :

So that beer tastes the way beer should!

Open up new possibilities

smartDRAFT™: top quality guarantees pure enjoyment, whether you use it as an alternative to an existing bar or as an additional dispensing point for special beers or trendy drinks, or even as a mobile bar for outdoor events.

Open up new market opportunities for your business by offering fresh draught beer in premium quality even where, up to now, only bottles were available!



smartDRAFT™ KEG



smartDRAFT™ TAP



smartDRAFT™ MINI, STANDARD and TROPICAL

The benefits that make the difference

For breweries, their customers in the restaurants, catering business, the retail trade and, above all, for consumers, smartDRAFT™ offers a great range of convincing benefits.

Flavour of the highest quality

- Lastingly fresh draught beer flavour and best dispensing quality
- Perfect drinking temperature, all the time
- Perfect hygiene thanks to the one-way beer line
- Integrated CO₂ supply

Economical dispensing system

- Ideal for smaller restaurants and catering businesses
- Low investment costs
- No tapping wastage
- No cleaning required for beer lines and tap, no servicing and maintenance costs
- New sales potential due to mobile dispensing

Modern marketing

- High-quality and elegant design – fit for the finest restaurants
- Ideal advertising space, direct access to customers
- Premium quality increases sales and customer loyalty

**Control KEG**

SCHÄFER control KEGs serve to check the filling, the cleaning and the pressure. Control KEGs are available for all SCHÄFER KEG types

Cleaning KEG

Cleaning KEGs from SCHÄFER optimise the decentralised cleaning of the dispense facility from the dispense head to the tap. Up to five beverage pipes with KEG connections can be cleaned at the same time. Moreover the Cleaning KEG for soft-drink dispenser systems is available with an additional connection type for older container connectors

Equipped for success – Your success!

SCHÄFER offers the beverage industry not only high-quality KEGs for every application, but also perfectly matching system components. We look at things from our customers point of view, thinking in terms of complete units, because only a system which functions as an enclosed compatible unit can really bring success. For you and us.



Fitting types

Whether basket, flat or combination, soft drink, standard or safety, threaded or threadless fittings, all fitting types can be used

On this page we would like to present a small selection of ideas from our complete SCHÄFER range. If you would like more details, or if you are interested in proposals for special solutions, we will be happy to offer you personal and comprehensive advice at any time. Just contact us.



Dispense heads

For each fitting there is the appropriate dispense head. Simply attach and tap. Clean, fast and reliable



Systematic KEG management

To be able to provide the drinks industry with a complete KEG logistics and KEG management system, competent companies from this sector, AEG Identifikationssysteme, KHS and SCHÄFER WERKE, joined together to form a COLO (container logistics) working group in 1996. The objective of COLO is to be able to offer customers an unbroken logistics system with a considerable cost-cutting potential both in filling and retail operations. Such operations mainly include:

- plant-internal logistics with stock level control
- stock management
- container tracking in the market place

For more information visit www.colo-logistics.de



Adapter ring

The various adapter rings allow SCHÄFER Slimline KEGs to be used on existing cleaning and filling plants for DIN or Euro standard KEGs



Traceability

All SCHÄFER KEGs can be fitted with a permanently integrated coding system, such as character code, barcode, transponder or datixPLUS, according to your requirements



Coding systems bring more transparency to logistics and allow comprehensive container management

Our service for your KEG



To ensure your KEGs remain fully functional over many years in their hard working environments, SCHÄFER Container Systems offers customers a comprehensive KEG service.

Repair and refurbishing of all KEG types

- Partial damage to the PU jacket can be repaired
- Damaged polypropylene top and bottom rings can be replaced
- Repair of dents in top and bottom rings
- Neck repairs
- Volume alterations, e.g. from 50 l to 30 l (not for PU-coated KEGs)
- Retrofitting transponders in all types
- Neutralising logos
- Application of new logos
- Re-working defective welding seams (not on PU-coated KEGs)
- Polishing KEGs
- Calibration on request

KEGs in your own design



Top-ring embossing on stainless steel KEGs



In-mould labelling on PU KEGs



Logos applied for all brands, even logo changes are possible



Division Management

Peter Feckler

Authorized Signatory
Division Managing Director
Tel.: +49 (0) 2735/787-509
Fax: +49 (0) 2735/787-493
Mobile: +49 (0) 171/3865647
E-Mail: pfeckler@schaefer-container-systems.de

Technical Support

Stefan Schreiber

Manager Technical Consultancy and Service
Tel.: +49 (0) 2735/787-450
Fax: +49 (0) 2735/787-493
Mobile: +49 (0) 170/2372948
E-Mail: sschreiber@schaefer-container-systems.de

Service and Order Centre

Peggy Korzak

Sales Assistant
Tel.: +49 (0) 2735/787-481
Fax: +49 (0) 2735/787-493
E-Mail: pkorzak@schaefer-container-systems.de

Eva-Maria Krahforst

Sales Assistant
Tel.: +49 (0) 2735/787-418
Fax: +49 (0) 2735/787-493
E-Mail: ekrahforst@schaefer-container-systems.de

Jana Jelínková

Sales Assistant
SCHÄFER Sudex s.r.o.
Podolí 5
CZ-58401 Ledec nad Sázavou
Tel.: +420/569 711-221
Fax: +420/569 711-226
E-Mail: jjelinkova@schaefer-sudex.cz

SALES D / A / CH

Uwe Herzog

Sales Managing Director
Germany, Austria, Switzerland
Tel.: +49 (0) 2735/787-253
Fax: +49 (0) 2735/787-493
Mobile: +49 (0) 160/7474426
E-Mail: uherzog@schaefer-container-systems.de

Michael Ernst

Sales Northern and Eastern Germany
Tel.: +49 (0) 2735/787-488
Fax: +49 (0) 2735/787-493
Mobile: +49 (0) 171/4135945
E-Mail: mernst@schaefer-container-systems.de

International Sales

Rüdiger Diensberg

Authorized Signatory
Area-/Key Account-Sales Director
Tel.: +49 (0) 2735/787-524
Fax: +49 (0) 2735/787-493
Mobile: +49 (0) 171/3865648
E-Mail: rdiensberg@schaefer-container-systems.de

Uwe Herzog

Area-/Key Account-Sales Director
Tel.: +49 (0) 2735/787-253
Fax: +49 (0) 2735/787-493
Mobile: +49 (0) 160/7474426
E-Mail: uherzog@schaefer-container-systems.de

Henning Schlabach

Area-/Key Account-Sales Director
Tel.: +49 (0) 2735/787-273
Fax: +49 (0) 2735/787-493
Mobile: +49 (0) 160/90542094
E-Mail: hschlabach@schaefer-container-systems.de

Zdenek Zelený

Authorized Signatory
Area-/Key Account-Sales Director
SCHÄFER SUDEX s.r.o.
Podolí 5
CZ-58401 Ledeč nad Sázavou
Tel.: +420/569 711-222
Fax: +420/569 711-226
Mobile: +420/602 36 62 17
E-Mail: zzeleny@schaefer-sudex.cz

International Agents

Europe

Rainer Beyer

Benelux / France
QuaDis Luxembourg S.A.
Résidence du Var B.P.17
L-9952 Drinklange G.D. Luxembourg
Tel.: +352/26 95 73 18
Fax: +352/26 95 73 19
Mobile: +352/621 288 188
E-Mail: rainer.beyer@skynet.be

Alan Morrow, Kieron Morrow,

Liam Morrow

Great Britain / Ireland
Morrow Brothers Limited
433 Walton Summit
GB-Preston PR5 8AR
Tel.: +44/1772 311882
Fax: +44/1772 627863
E-Mail: info@morrow-brothers.co.uk
Internet: www.morrow-brothers.co.uk

Franz Gruber

Austria
Domo-Sanifer, Koller & Reisinger
Produktion-Handel GmbH
Tuffeltsham 75
A-4800 Attnang-Puchheim
Tel.: +43/76 74-6 04
Fax: +43/76 74-60 45 55
Mobile: +43/66 41 10 07 57

Manuela Luoni

Italy
VIN SERVICE S.R.L.
Via G. Falcone, 26/34
I-24050 Zanica/Bergamo
Tel.: +39/035-67 23 61
Fax: +39/035-67 26 99
E-Mail: info@vinservice.it

Francisco Machado da Silva

Portugal / Cape Verde
NORTEMBAC, LDA.
Zona Industrial da Maia 1, Sector 1
Lugar do Outeiro
Lote 9, Gemunde
P.O. Box 6025
P-4470 Maia
Tel.: +351/22-9 43 72 00 office
Tel.: +351/22-9 43 72 01
Fax: +351/22-9 43 72 09
Mobile: +351/9 39 39 39 23
E-Mail: fmsilva@nortembac.com
E-Mail: memilia@nortembac.com

Vicente Cifone

Spain
Carretera Valencia 68, casa 19
E-50410 Cuarte de Huerva, Zaragoza
Tel.: +34/976 503 101
Fax: +34/976 503 101
Mobile: +34/667 673 756
E-Mail: CIFONEV@telefonica.net

Tadeusz Gonciarczyk

Poland
KEG SERWIS
Ul. Wałowa 3
PL-51-523 Wrocław
Tel.: +48/71 34 666 32
Fax: +48/71 34 666 88
Mobile: +48/505 154 152
E-Mail: biuro@keg-service.pl

Christian Torstein

Denmark
TORSTEIN DRIKKEVARE SERVICE
Drikkevareservice apS
Strandvejen 42, Saksild
DK-8300 Odder
Tel.: +45/86 559 772
Fax: +45/86 559 793
E-Mail: info@torstein.dk
www.torstein.dk

Emilian Banu

Romania
BTT SRL
Str. Soldad Magati Nr. 21
Cod 0031581, Sector 3
RO-Bukarest
Tel.: +40/372 777 888
Fax: +40/212 501 930
Mobile: +40/722 243 810
E-Mail: emilian@banutt.eu

Moty Nagar

Israel
Moses Beer
Nachal Bokek 15
IL-Modiin 71700
Tel: +972/544 933976
E-Mail: mosesebeer@gmail.com

Boulos Lebbos

Arab Countries
Egypt / Morocco / Tunisia / Cyprus /
Iraq / Iran / Turkey / Greece / Jordan
F.B.I.C. s.a.
254, Rue Bollinckx
B-1070 Brussel
Tel.: +32/2-4 28 11 33
Fax: +32/2-4 28 20 03, +32/2-4 26 37 13
Mobile: +32/4 75 41 92 81
E-Mail: b.lebbos@fbicsa.com

Overseas**Yohannes Megerssa**

Ethiopia
Beyo Plc.
Alem Bldg. No. 2,5 th Floor
Africa Avenue
ETH-Addis Abeba
Tel.: +251/11 618 5576
Fax: +251/11 618 3779
Mobile: +251/11 922 8839
E-Mail: y.megerssa@beyopl.com

Mike Spencer

Australia / New Zealand
Brewtique Pty Ltd.
Unit 16
12-14 Beaumont Road
Mt Kuring-Gai NSW 2080
Australia
Tel.: +612/94 89 88 88
Fax: +612/83 23 43 57
Mobile: +61/419 62 54 47
E-Mail: beer@brewtique.com.au
Internet: www.brewtique.com.au

Vicente Cifone

South and Central America
Carretera Valencia 68, casa 19
E-50410 Cuarte de Huerva, Zaragoza
Tel.: +34/976 503 101
Fax: +34/976 503 101
Mobile: +34/667 673 756
E-Mail: CIFONEV@telefonica.net

Richard Wagner

USA / Canada
KEG Club Inc.
162 Phelps Road
Brantford ON N3T 5L5
Canada
Tel.: +1/519-751 12 01
Fax: +1/519-753 23 05
Mobil: +1/519-209 13 60
E-Mail: richard@schaeferkegs.com

Srihari Sriramaiah

India / Sri Lanka
Sanky Technical Consulting
Private Ltd.
33, 3rd Main, 3rd Cross. RMV 2nd Stage
Dollar Colony, Bangalore 560094
Indien
Tel.: +91/80 23 51 59 00/1
Fax: +91/80 23 51 59 05
Mobile: +91/98 44 00 60 70
E-Mail: hari@sanky.com

Nguyen Hoai Van

Vietnam
I & M Trading Co. Ltd.
24 Nguy Nhu Kon Tum
Thanh Xuan District
Hanoi/Vietnam
Tel.: +84/4 35 54 38 72
+84/9 13 21 24 88
Fax: +84/4 35 54 38 73
E-Mail: vannguyenhoai@imco.com.vn

More information?



New potential for draught beer

Our production plants



Plant Neunkirchen



Plant Betzdorf



Plant Ledec nad Sázavou (CZ)

